

ETHNIC GROUPS

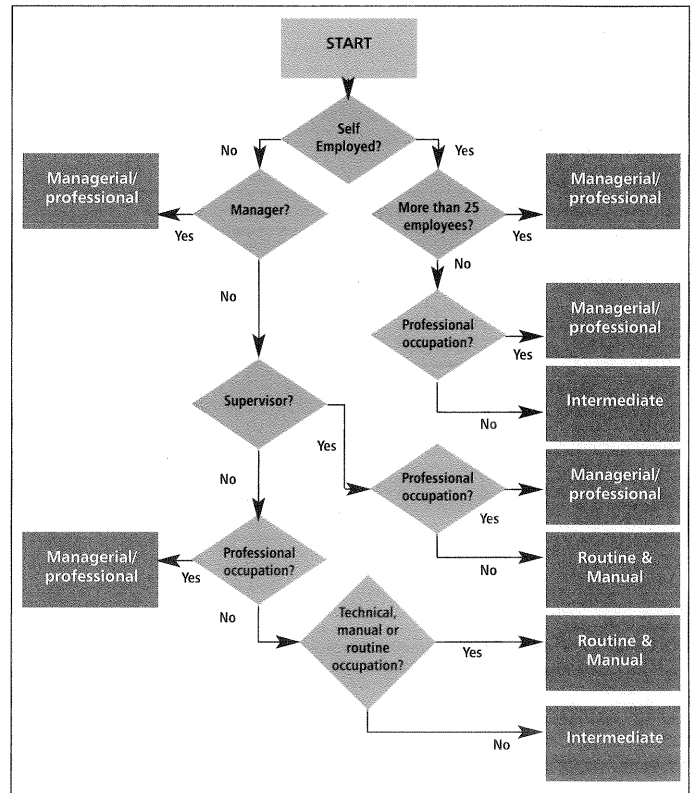
(Based on categories for 2001 census)

Code number

- 1 White – British
- 2 White – Irish
- 3 White – any other background (please specify)
- 4 Mixed – White & Black Caribbean
- 5 Mixed – White & Black African
- 6 Mixed – White & Asian
- 7 Mixed – any other mixed background
- 8 Asian or Asian British – Indian
- 9 Asian or Asian British – Pakistani
- 10 Asian or Asian British – Bangladeshi
- 11 Asian or Asian British – any other Asian background
- 12 Black or Black British – Caribbean
- 13 Black or Black British – African
- 14 Black or Black British – any other Black background
- 15 Chinese
- 16 Turkish
- 17 Any other ethnic group

OCCUPATIONAL CODE

- 1 Full-time student
- 2 Never worked or long-term unemployed. A client is classified as long term unemployed if they have currently been unemployed for one year or more. If unemployed for less than a year last known occupation should be used for classification.
- 3 Retired
- 4 Home Carer – i.e. looking after children, family or home
- 5 Sick/disabled and unable to work
- 6 Managerial and professional occupations, examples include: accountant, artist, civil/mechanical engineer, medical practitioner, musician, nurse, police officer (sergeant or above), physiotherapist, scientist, social worker, software engineer, solicitor, teacher, welfare officer. Those usually responsible for planning, organising and co-ordinating work for finance.
- 7 Intermediate occupations, examples include: call centre agent, clerical worker, nursery auxiliary, office clerk, secretary.
- 8 Routine and Manual occupations, examples include: electrician, fitter, gardener, inspector, plumber, printer, train driver, tool maker, bar staff, caretaker, catering assistant, cleaner, farm worker, HGV driver, labourer, machine operative, messenger, packer, porter, postal worker, receptionist, sales assistant, security guard, sewing machinist, van driver, waiter/waitress.
- 9 Prisoner
- 10 Unable to code
- 11 If a client is self-employed please use the flowchart to determine classification



REIMBURSEMENT PRICES FOR NICOTINE REPLACEMENT THERAPY PRODUCTS

24 hour Patch x 7 21mg, 14mg	£9.97	Nicotinell Gum 2mg pack of 24	£3.01
Nicopatch 24 hour patch x 7 21mg, 14mg	£9.40	Niquitin CQ Gum, 2mg, 4mg pack of 96	£8.55
16 hour Patch x 7 15mg, 10mg	£9.07	Niquitin CQ Gum, 2mg, 4mg pack of 24	£2.85
Nicorette Invisi 16 hour Patch x 7 25mg, 15mg	£9.97	Niquitin CQ Gum, 2mg, 4mg pack of 12	£1.71
Inhalator Starter Pack 6 cartridges	£3.99	Nicorette Gum 4mg pack of 105	£10.83
Inhalator refill pack 42 cartridges	£12.81	Nicorette Gum 2mg pack of 105	£8.89
Niquitin CQ Lozenge 2mg, 4mg Pack of 72	£9.97	Nicorette Gum 4mg pack of 30	£3.99
Niquitin CQ Lozenge 2mg, 4mg Pack of 36	£5.12	Nicorette Gum 2mg pack of 30	£3.25
Nicotinell Lozenge 2mg pack of 96	£10.60	Nicorette Icy White Gum 4mg Pack of 105	£11.51
Nicotinell Lozenge 1mg pack of 96	£9.12	Nicorette Icy White Gum 2mg Pack of 105	£9.40
Nicotinell Lozenge 2mg pack of 36	£4.95	Nicorette Icy White Gum 2mg Pack of 30	£3.42
Nicotinell Lozenge 1mg pack of 36	£4.27	Microtab pack of 30	£3.99
Nicopass Lozenge 1.5mg pack of 12	£1.68	Microtab pack of 105	£11.12
Nicotinell Gum 4mg pack of 96	£10.26	Nasal Spray	£12.27
Nicotinell Gum 2mg pack of 96	£8.26	Niquitin Mini Lozenges 1.5 mg, 4mg pack of 20	£3.18
Nicotinell Gum 4mg pack of 24	£3.30	Niquitin Mini Lozenges 1.5 mg, 4mg pack of 60	£8.93

Prices based on Drug Tariff, November 2009

Remuneration

For counselling carried out by a trained level 2 advisor within the pharmacy.

Payment will be dependant upon the submission of a completed monitoring form.

Payment of £10 for every client attending an initial appointment plus a further £35 for clients who successfully quit at 4 weeks and are seen for a minimum of 5 sessions.