

## Changes to Public Health in the NHS, how will it work in the future?

Sue Mitchell  
Associate Director Public Health

LPC – 8<sup>th</sup> November 2011

Public Health is.....

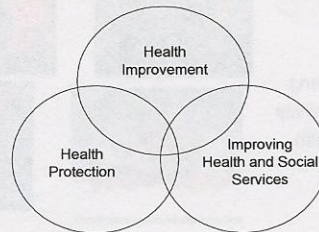
“The Science and Art of  
preventing disease, prolonging life and  
promoting health through the organised  
efforts of society”

(Sir Donald Acheson, *Public Health in England: Report of the  
Committee of Inquiry into the Future Development of the Public  
Health Function, 1988* )

### Outline

1. Introduction to Public Health
2. Current Public Health Structures in England
3. Proposed new structures for Public Health in England
4. Health and Wellbeing Boards
5. Public Health System Documents and Policy
6. Some Key Dates



### Three Key Domains



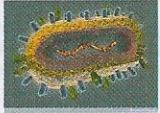
**LiveHealthy**  
Health Wellbeing Happiness

### Health Protection

- Infectious diseases
- Chemicals and poisons
- Radiation
- Emergency response
- Environmental health hazards



**Surveillance**



**LiveHealthy**  
Health Wellbeing Happiness

### Improving Health Services



- Clinical effectiveness
- Efficiency
- Service planning
- Audit and evaluation
- Clinical governance
- Equity






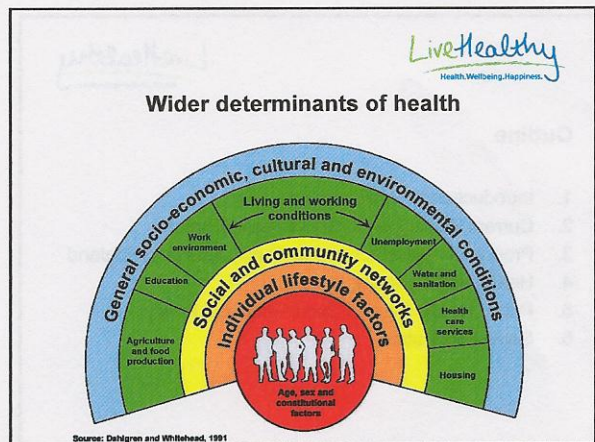
**LiveHealthy**  
Health Wellbeing Happiness

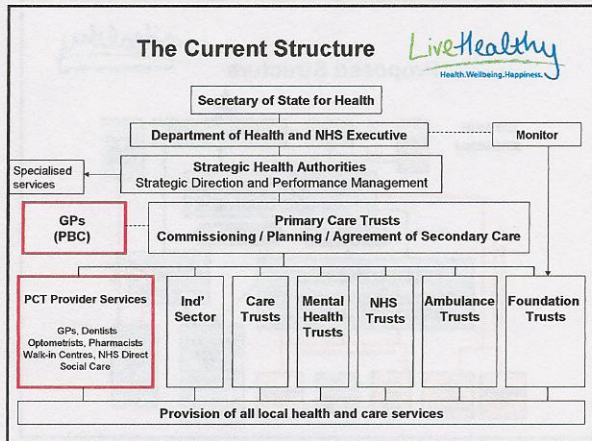
### Health Improvement

- Smoking
- Alcohol
- Obesity
- Healthy eating
- Physical activity
- Sexual health

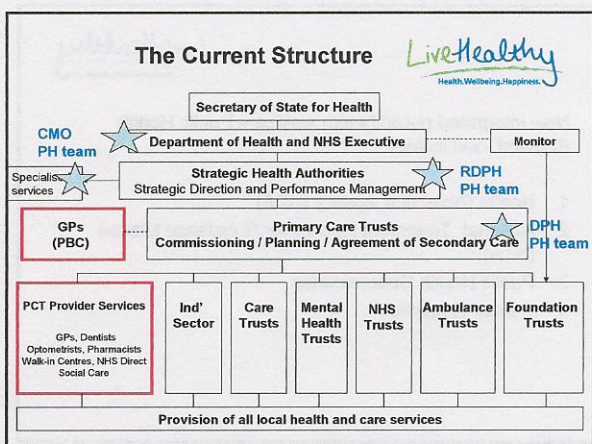







- ### In addition
- Health Protection Agency
  - Public Health Observatories
  - National NHS bodies e.g. NICE
  - Department for International Development
  - Universities



### NHS Reforms

NHS White Paper *Equity and Excellence* (DH 2010) states that PCT responsibilities for local health improvement will transfer to local authorities (LAs)

NHS White Paper *Healthy Lives, Healthy People* (DH 2011) reiterated that each upper tier/unitary authority will lead a statutory Health and Wellbeing Board (HWB).

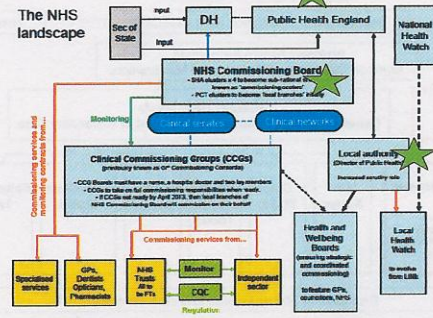
Power and responsibility for commissioning services devolved to the healthcare professionals closest to patients working as part of Clinical Commissioning Groups (CCGs).

Upper tier local authorities will have a role across the three domains of public health.

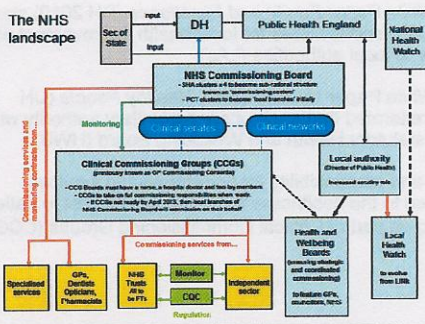
Prescribed functions to be delivered by local authorities will include:

- Director of Public Health has a duty to ensure there are plans in place to protect the health of the population;
- Ensuring NHS commissioners receive the public health advice they need
- Appropriate access to sexual health services
- The National Child Measurement Programme
- NHS Health Check assessment
- Elements of the Healthy Child Programme
- Substance misuse
- Tobacco control and smoking cessation

### Proposed Structure



### Proposed Structure



New integrated public health service – Public Health England - will include

1. Health Protection Agency (HPA)
2. National Treatment Agency for Substance Misuse (NTA)
3. Public Health Observatories
4. Cancer Registries

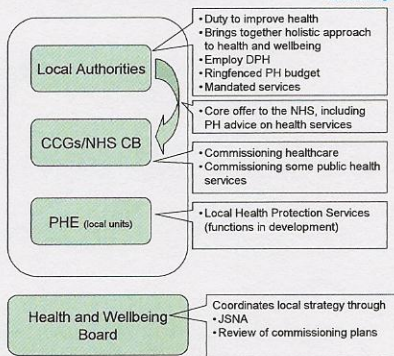
Public Health England will have three principal routes for funding services

- granting the public health ring-fenced budget to local government;
- asking the NHSCB to commission services, such as screening services, and the relevant elements of the GP contract; and
- commissioning or providing services directly, for example national purchasing of vaccines, national communication campaigns, or health protection functions

### Health and Wellbeing Boards

- Established and led by Upper Tier Unitary authorities
- Health and wellbeing boards will be established as committees of upper-tier local authorities. The way they will be structured is different from previous joint arrangements. Health and wellbeing boards should not be considered islands cut off from other areas: they will need to work with other health and wellbeing boards regionally and with the national structures such as the NHS Commissioning Board and Public Health England.
- Membership will be determined locally, but should include representation from CCG (s)

### Roles in the new Public Health System



### Public Health Systems, documents and Policy Updates expected late autumn:

- PH Outcomes Framework
- Operating model for PH England
- PH in LAs – new grant conditions, mandatory services and PH advice to the NHS
- PH Funding – including shadow allocations
- Workforce Strategy and other HR updates

**Some Key dates**

- By September – baseline assessment of PH spend
- By October – each PCT cluster to have completed PH functions Map
- By December – HR concordat and shadow allocations published
- By January 2012 Transition preparation tool-kit
- By April 2012 – working in shadow form – towards full formal transfer of responsibilities, functions and resources as of midnight 31<sup>st</sup> March 2013